



Hard Chess Puzzle # 0114

By

G Bud Games
<https://gbud.in>

January 24, 2022

Contents

Hard Chess puzzle # 0114 - Mate in 4 moves	4
Hard chess puzzle 0114	4
Solution to hard chess puzzle 0114	5
Solution 1	5
Right moves for the solution to the hard chess puzzle 0114	9
Explanation for the moves	9
Categories of hard chess puzzle 0114	10
hard chess puzzle 0114 chart	11
How to view the solution to hard chess puzzle 0114	13
How to get help for moves in the hard chess puzzle 0114	14
Play chess for free	15

List of Figures

1	Solve this hard chess puzzle 0114. Mate in 4 moves @ https://gbud.in/gwxk9b3	4
2	Solve this hard chess puzzle online with solution @ https://gbud.in/gwxk9b3	4
3	Initial board position of hard chess puzzle 0114	5
4	Rh8+	6
5	Kxh8	6
6	Qh5+	7
7	Kg8	7
8	Qh7+	8
9	Kf8	8
10	Qh8#	9
11	hard chess puzzle 114 chart 1	11
12	hard chess puzzle 114 chart 2	12
13	hard chess puzzle 114 chart 3	12
14	hard chess puzzle 114 chart 4	13
15	Click the solution button to view solutions @ https://gbud.in/gwxk9b3	13
16	Click the help button to get help on next move @ https://gbud.in/gwxk9b3	14
17	Solve more hard puzzles @ https://gbud.in/chshdpz	14
18	Solve other puzzles @ https://gbud.in/chsgppz	14
19	Play chess online for free. Solve puzzles and play with friends	15

20	Solve this puzzle online by scanning this QR code or go to the link below	16
----	-------------------------------------------------------------------------------------	----

Hard Chess puzzle # 0114 - Mate in 4 moves

Solve this hard chess puzzle and improve your chess games through improvement of your chess strategies and chess tactics. This hard puzzle is a subset of [kids games](#).

Puzzle No : 0114

Difficulty level : hard

Description : Mate in 4 moves

Next Move : White

Player level : Advanced

Short URL for puzzle : <https://gbud.in/gwxk9b3>

Hard chess puzzle 0114

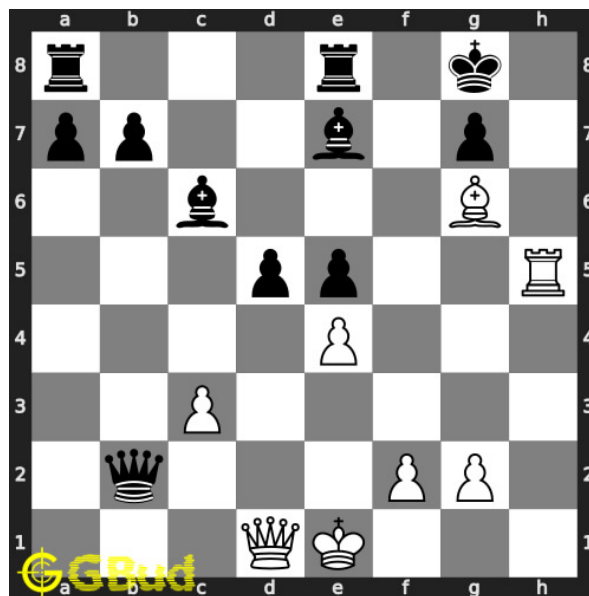


Figure 1: Solve this hard chess puzzle 0114. Mate in 4 moves @ <https://gbud.in/gwxk9b3>



Figure 2: Solve this hard chess puzzle online with solution @ <https://gbud.in/gwxk9b3>

Dont forget to check out [chess puzzles](#), [easy chess puzzles](#), [medium chess puzzles](#), [hard chess puzzles](#) and [chess puzzles collections](#) .

Solution to hard chess puzzle 0114

At this puzzle, next [move](#) is by [White](#). The objective of the puzzle is to mate in 4 moves.

See the interactive solution at the [puzzle page](#)

Solution 1

Initial board position This is the initial board position of hard chess puzzle 0114.

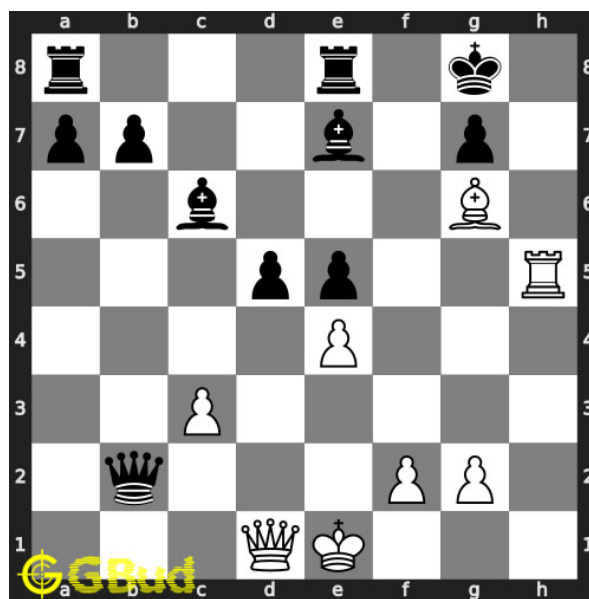


Figure 3: Initial board position of hard chess puzzle 0114

Move 1 Move by white

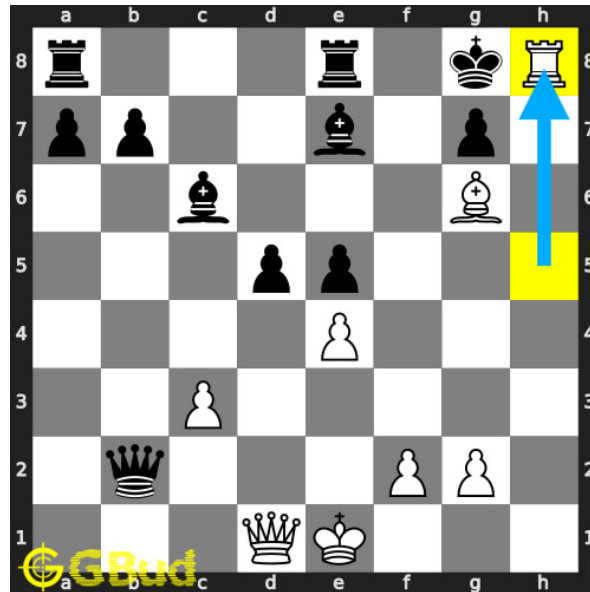


Figure 4: Rh8+

your **rook sacrifices** itself to vacate the **h5 square** and to attract the **king** to **h8**.

Move 2 Move by black

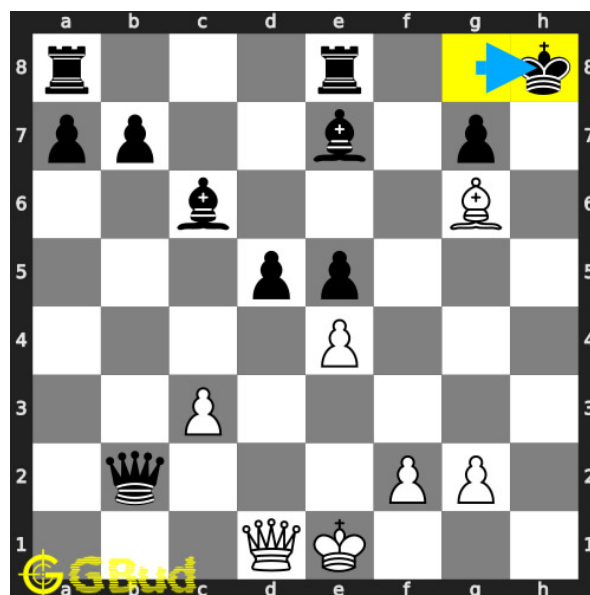


Figure 5: Kxh8

opponent's **king captures** your hanging **rook** as this is the only legal **move** available.

Move 3 Move by white

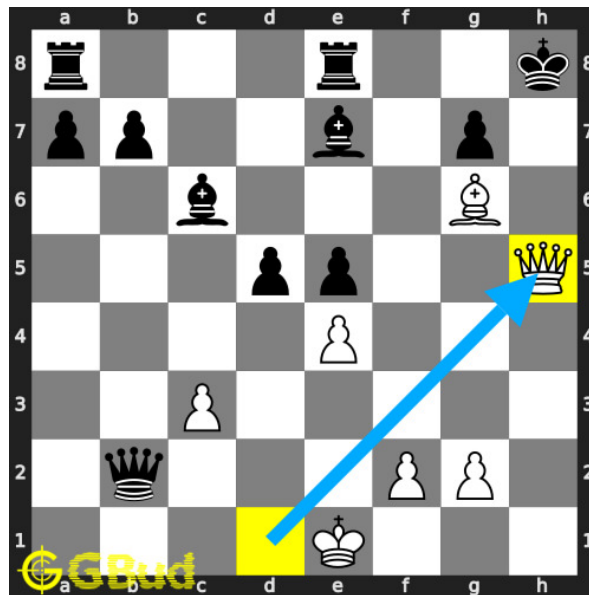


Figure 6: Qh5+

your **queen moves** to **h5** and gives **check**.

Move 4 Move by black

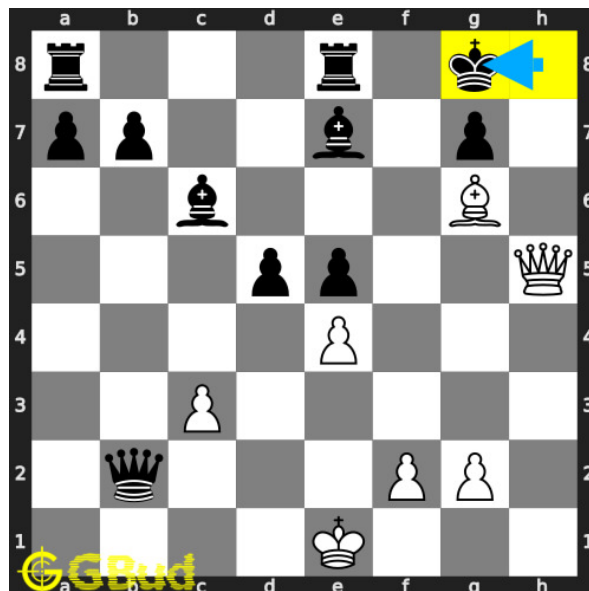


Figure 7: Kg8

opponent's **king moves** to **g8**.

Move 5 Move by white

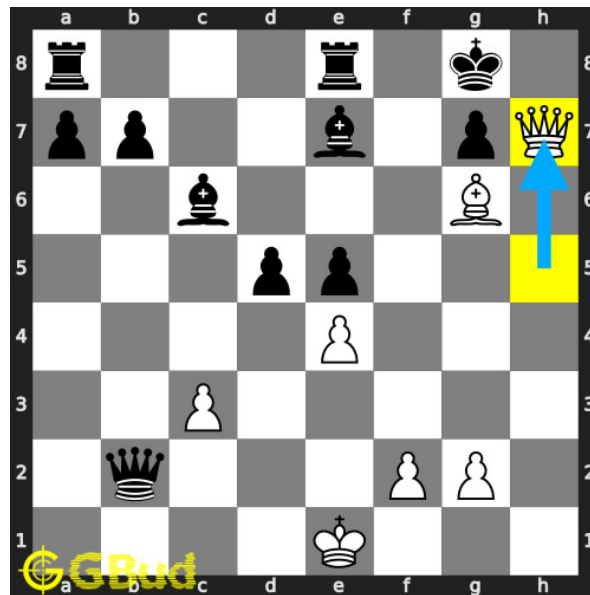


Figure 8: Qh7+

your queen moves to h7 and gives check to opponent. opponent's king can't capture your queen since it is supported by bishop.

Move 6 Move by black

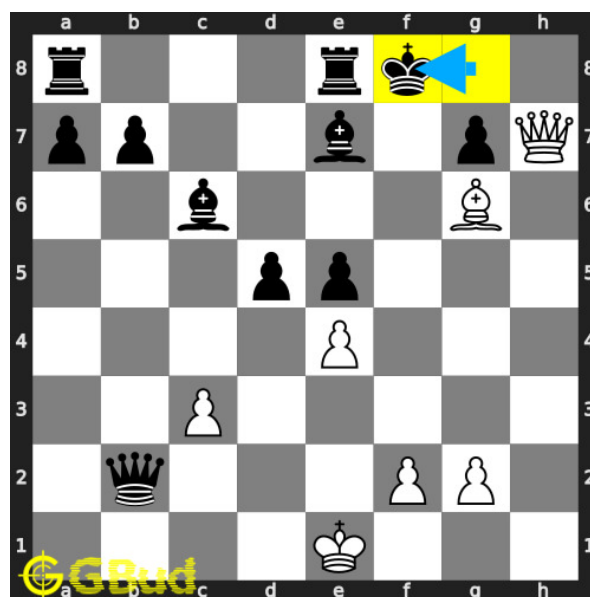


Figure 9: Kf8

opponent's king moves to f8.

Move 7 Move by white

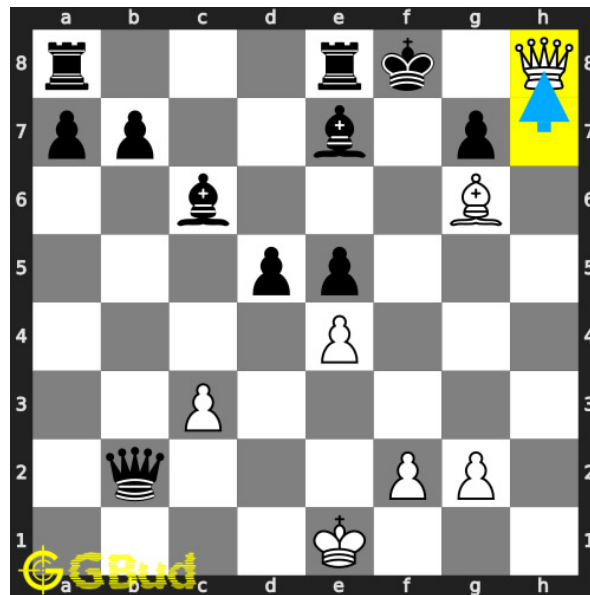


Figure 10: Qh8#

your queen moves to h8 and checkmate. opponent's king can't move since it is blocked by friendly pieces and the attack from your bishop. this is how you can mate in 4 moves.

Right moves for the solution to the hard chess puzzle 0114

Based on the objective of the puzzle, you have to make the right moves. Following are the right moves

1. Rh8+, Qh5+, Qh7+, Qh8#

Explanation for the moves

1. Rh8+ - Your rook sacrifices itself to vacate the h5 square and to attract the king to h8.
2. Kxh8 - Opponent's king captures your hanging rook as this is the only legal move available.
3. Qh5+ - Your queen moves to h5 and gives check.
4. Kg8 - Opponent's king moves to g8.
5. Qh7+ - Your queen moves to h7 and gives check to opponent. Opponent's king can't capture your queen since it is supported by bishop.
6. Kf8 - Opponent's king moves to f8.

7. Qh8# - Your queen moves to h8 and checkmate. Opponent's king can't move since it is blocked by friendly pieces and the attack from your bishop. This is how you can mate in 4 moves.
8. For right move - You have just moved rook and queen effectively to win the game. Keep up the good work
9. For wrong move - You could have sacrificed your rook and had a checkmate with the queen. Try again

Categories of hard chess puzzle 0114

This hard chess puzzle falls in these categories.

1. [Hard chess puzzles](#)
2. [Sacrifice puzzles in chess](#)
3. [Endgame puzzles in chess](#)
4. [Strategy puzzles in chess](#)
5. [Mate in 4 puzzles in chess](#)
6. [Rook puzzles in chess](#)
7. [Queen puzzles in chess](#)

hard chess puzzle 0114 chart



Figure 11: hard chess puzzle 114 chart 1



Figure 12: hard chess puzzle 114 chart 2



Figure 13: hard chess puzzle 114 chart 3

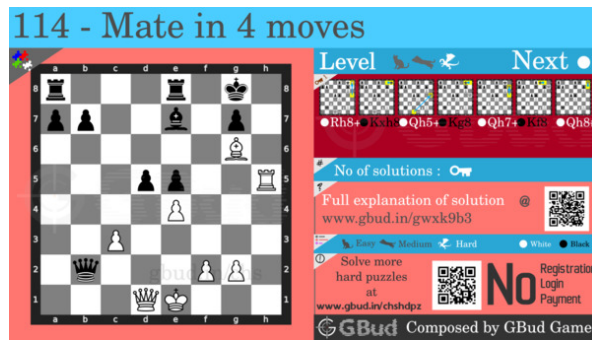


Figure 14: hard chess puzzle 114 chart 4

How to view the solution to hard chess puzzle 0114

To view the [solution to this puzzle](#), follow the steps given below

1. Go to the [puzzle page](#)
2. Click the solution button (Key as shown [below](#)) to view the solution



Figure 15: Click the solution button to view solutions @ <https://gbud.in/gwxk9b3>

How to get help for moves in the hard chess puzzle 0114

To get help or the possible next moves in the puzzle, , follow the steps given below

1. Go to the [puzzle page](#)
2. Click the help button (exclamation mark as shown [below](#)) to get help or suggestion on next possible [move](#)



Figure 16: Click the help button to get help on next move @ <https://gbud.in/gwxk9b3>



Figure 17: Solve more hard puzzles @ <https://gbud.in/chshdpz>



Figure 18: Solve other puzzles @ <https://gbud.in/chsgppz>

Play chess for free

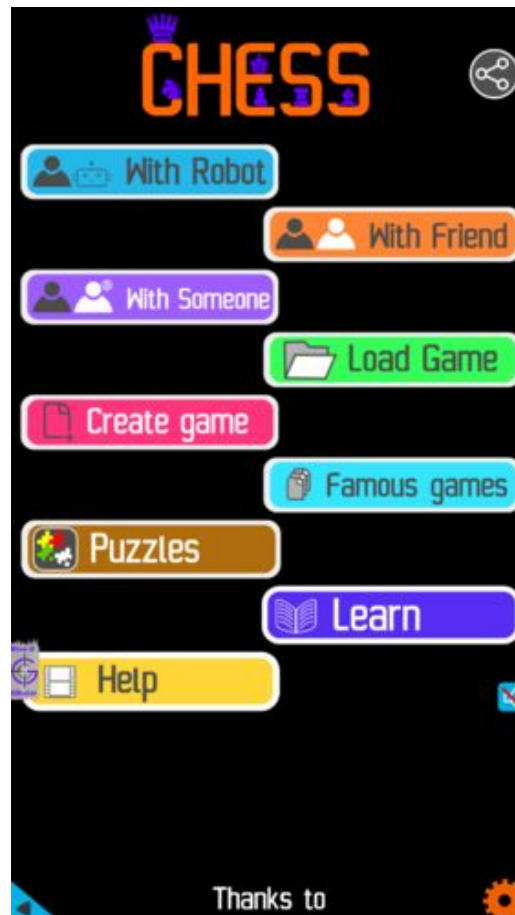


Figure 19: Play chess online for free. Solve puzzles and play with friends

Play chess for free at <https://gbud.in/chs>

We present you a platform to play chess online with friends for free. No need to install any app. You can play chess for free without registration or login.

Simple. You can do several chess related activities.

1. solve chess puzzles
2. learn about chess
3. play chess with computer
4. play chess with friend
5. create your own chess games

6. [fen viewer](#)
7. [fen editor](#)
8. [fen generator](#)
9. [pgn viewer](#)
10. [chess board editor](#)
11. [view famous chess games.](#)



Figure 20: Solve this puzzle online by scanning this QR code or go to the link below

<https://gbud.in/gwxk9b3>

Read the latest article on Hard Chess puzzle # 0114 - Mate in 4 moves by scanning this QR code or click the link

Previous article : « [Hard Chess puzzle # 0113 - Mate in 3 moves](#)

Next article : [Hard Chess puzzle # 0115 - Mate in 3 moves](#) »

[Back to top](#)

[Contact Us](#)